



INNOVATIONS 19.3

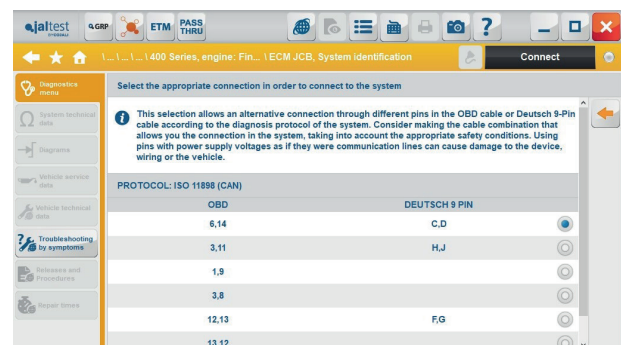
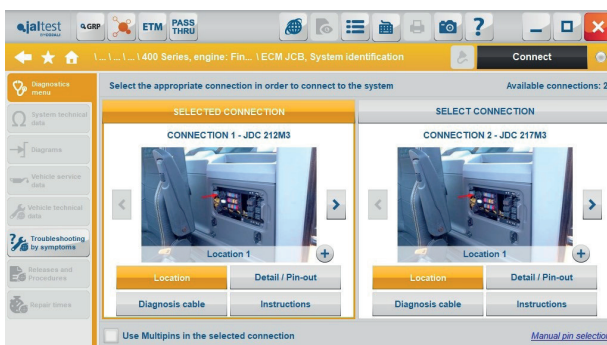


SOFTWARE INNOVATIONS

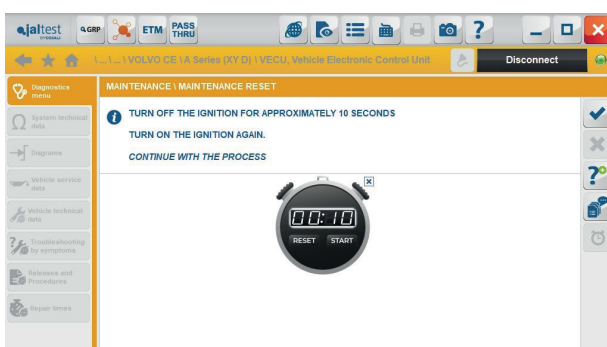
Manual selection of connection pins

This *Expert mode* function allows the user to configure the connection to a system by manually selecting the communication pins on the OBD or Deutsch 9-pin cable. In this way, this function offers the user an alternative to the connection offered by the software in the most common communication protocols.

Only available for V8 and higher devices.



Countdown timer



During the execution of some functionalities, it is necessary to wait a certain period of time until performing any operation. From this version, in this type of steps, Jaltest offers a countdown timer with the set time.

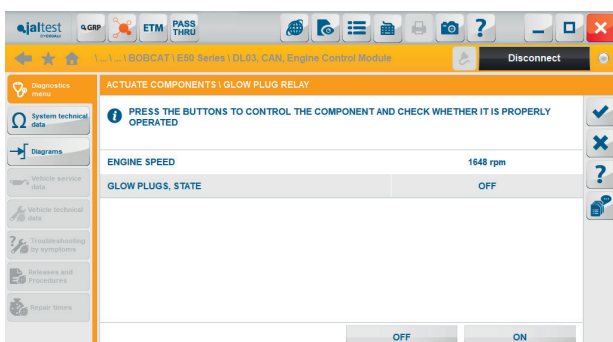
NEW DIAGNOSIS AND SYSTEM FUNCTIONALITIES

Take into account that this document is only a summary of the most important information of this new version. For more information, please visit Jaltest Report.

OFF-HIGHWAY AND CONSTRUCTION EQUIPMENT

Development of calibration in the [ZF Ergopower](#) transmission system is highlighted, making it necessary to use multipins. This transmission is installed in numerous models of different brands.

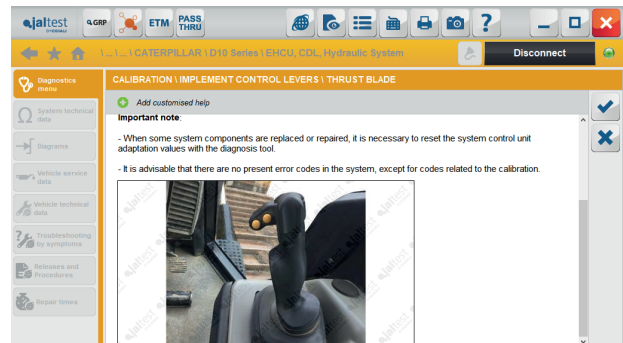
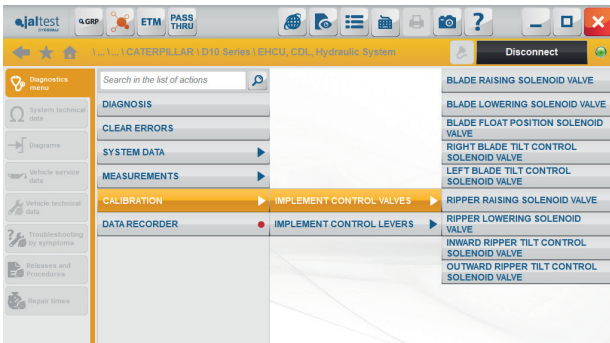
BOBCAT



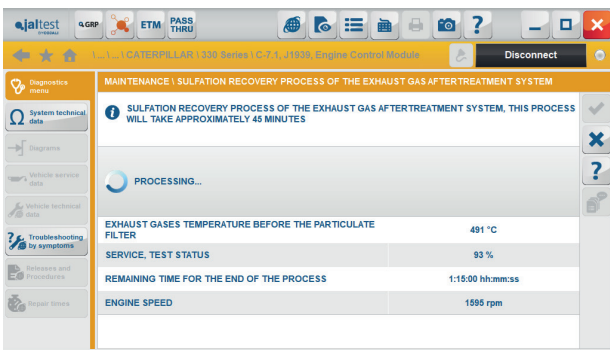
+ New [DL03](#) system in Doosan engines that includes functions such as heaters activation or fuel metering valve test.

CATERPILLAR

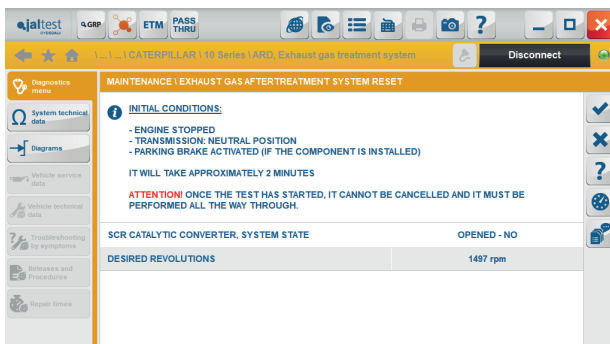
+ New **EHCU CDL** hydraulic system in D Series models where functions such as the calibration of blade control solenoid valves, ripper control solenoid valves and lever control solenoid valves have been developed.



+ New **C-4.4/C-6.6 CDL** engine management system that includes functions such as the injector coding.



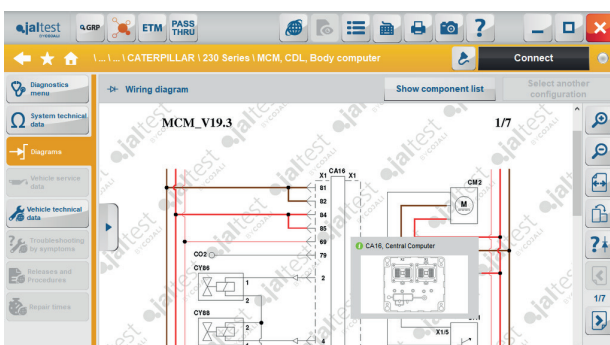
C7.1 SAE J1939 engine management system, performance check of diesel particulate filter regeneration and exhaust gas aftertreatment system sulfation recovery.



ARD Exhaust gas aftertreatment system, system reset.

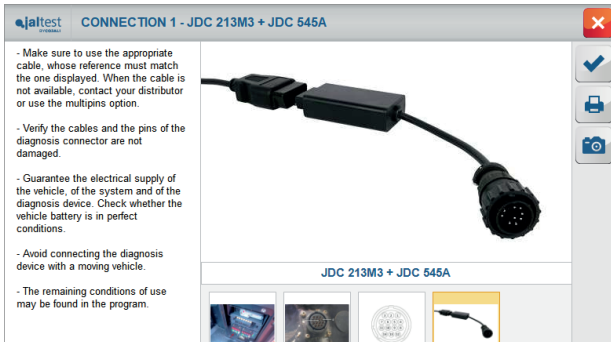
PTM PowerTrain control system, service brake calibration.

MCM Machine control module in 200 Series models, calibration of forward pump control solenoid valves and reverse pump control solenoid valves.



Wiring diagrams in systems from the brand, such as the **PTM** system in D Series models, **MCM** list system in 200 Series models or the **C-3.3B** engine.

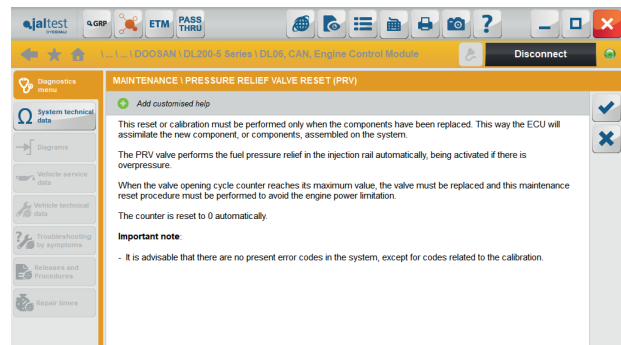
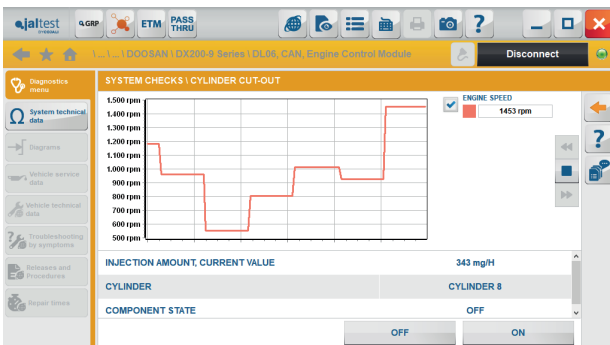
DOOSAN



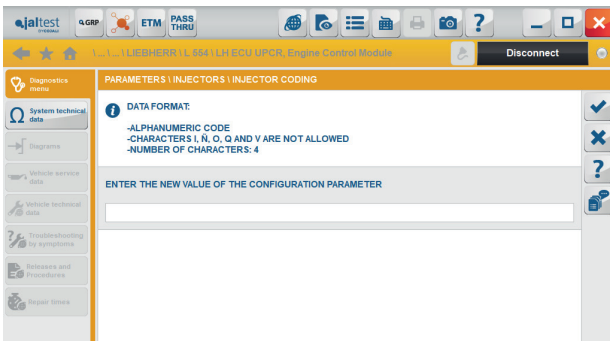
+ New JDC 545A connector.

+ New E-EPOS central computer.

DL06 CAN engine management system, coverage extension.



LIEBHERR



+ New LH-ECU-UPCR (RS232) engine management system.

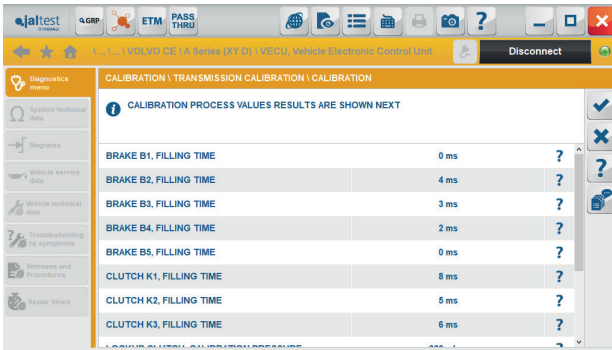
PERKINS

Perkins system in SAE J1939 for 1204E and 1206E engines, injector coding and fuel pressure relief valve check.

Wiring diagrams in the following systems:

- 854E, J1939
- 854F, J1939
- 1204E / 1206E, J1939
- 1204F / 1206F, J1939
- SCR / DEF

VOLVO CE



VECU machine management system in A Series model, calibration and reset of the transmission.

Wiring diagrams in engine management systems with V2 and V3 technologies.

STATIONARY ENGINES

CATERPILLAR

+ New C-4.4/C-6.6 CDL engine management system that includes functions such as the injector coding.

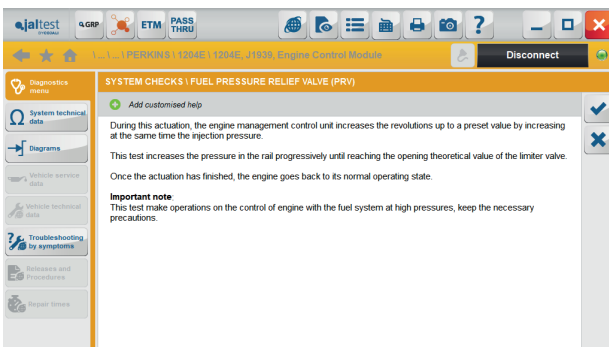
CUMMINS

Systems in QSX15 CM2350 and QSL9 CM2250 engines, coverage extension.

DOOSAN

DL06 CAN engine management system, coverage extension.

PERKINS



Perkins system in SAE J1939 for 1204E and 1206E engines, injector coding and fuel pressure relief valve check.

STREET SWEEPERS

NILFISK

- ⊕ New brand that includes 3 models.

